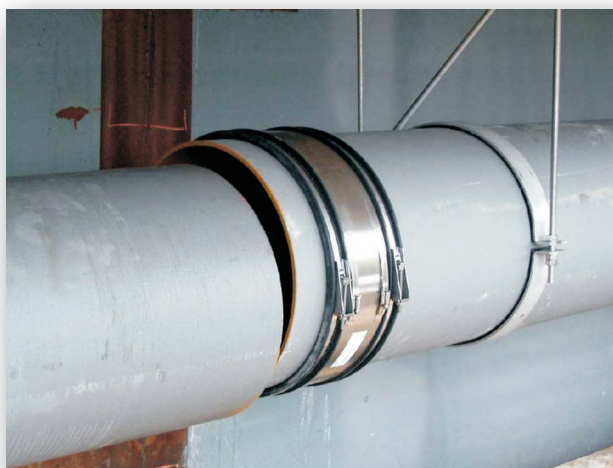


## BRIDGE CONNECTOR **MBC**

flexible couplings for bridge drainage



- **EASIEST WAY OF JOINING PIPES**
- **SAFETY THROUGH EUROPEAN TECHNICAL APPROVAL**
- **SEAL UP TO 1.0 BAR**
- **AVAILABLE FOR STANDARD BRIDGE DRAINAGE PIPES  
MADE FROM STAINLESS STEEL, GRP AND CAST IRON**

### BRIDGE CONNECTOR **MBC**

MÜCHER's Bridge Connectors MBC are ideal for use in bridge drainage applications.

A major advantage is the ease of installation. Whereas standard pipe joints need to be stuck together (pipe end into socket), the Bridge Connector can be slid over one pipe end before both ends are jointed and the Connector is properly positioned and tightened.

The advanced bolting system is manufactured from stainless steel grade 1.4401 (AISI 316). It is positioned on the 190 mm wide EPDM rubber sleeve and ensures the necessary compression to form a permanently sealed joint.

MÜCHER's TOX®-Technology eliminates spot-welds on the shear band and significantly enhances the ability to resist corrosion resulting in a more robust, longer lasting joint.

The Bridge Connector will resist an internal water pressure of up to 1.0 bar.

The European Technical Approval [ETA-09/0248](#) allows the use for pipes above ground. 27 national testing boards have accepted and validated the approval for flexible couplings for ALL pipe materials below and above ground.

