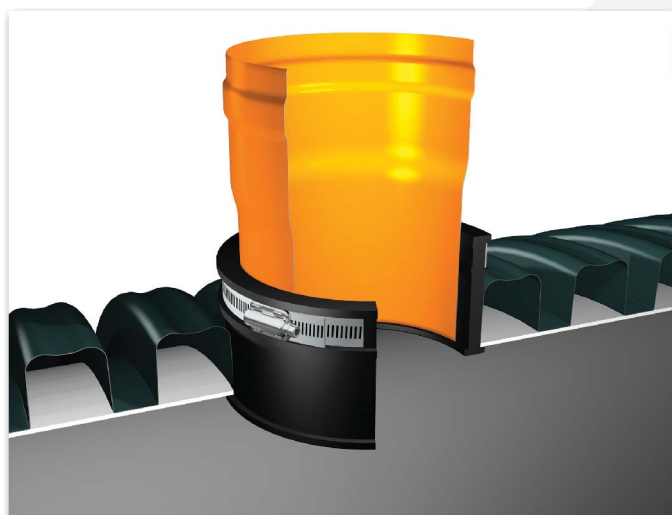


LATERAL CONNECTOR LTC

for structured wall plastic pipes from DN 300



For lateral plastic pipes in DN/OD:

110

125

160

200

LATERAL CONNECTOR LTC

Mücher Lateral Connectors provide a fast, easy and cost effective method of connecting 110, 125, 160 and 200 mm laterals to twinwall or ribbed pipes of nearly [all pipe manufacturers](#). The installation time from drilling to jointing the lateral is about 5 minutes.

This compression seal is manufactured from EPDM rubber, according to DIN EN 681-1 and will withstand a water pressure of [0.5 bar](#).

The connector is positioned into a pre-drilled hole in the twinwall or ribbed pipe and the lateral inserted until it reaches the stop at the bottom of the connector.

The seal to the lateral is provided by a stainless steel clamping band.

A unique high-quality hole saw is also available.

down to lowest stop (mark disappears), tighten the clamp to 6 Nm.

Mücher - **Hole Saw**

