

INSTALLATION

CANADA PLUS / EXTRA WIDE COUPLINGS

Insertion of a junction or repair of existing pipeline using Canada Plus / Extra Wide Couplings

- A. Cut section from pipeline using pipe cutter or disc saw and remove.
- B. This should be about 20mm longer than the junction or short pipe length to be installed.
- C. Loosen clamps on coupling and slide onto each end of existing pipeline then position new junction or short pipe length. (Lubricant not required.)
- D. Place pencil mark half a coupling width from each joint.
- E. Using these pencil marks, centre a coupling over one joint at a time.
- F. Tighten the worm drive units in sequence across the width of the coupling to recommended torque. Central shear ring is on the coupling, this should be tightened first.
- G. Upon completion of joints, carefully tamp bedding material under the pipe.



ADAPTOR / DRAIN

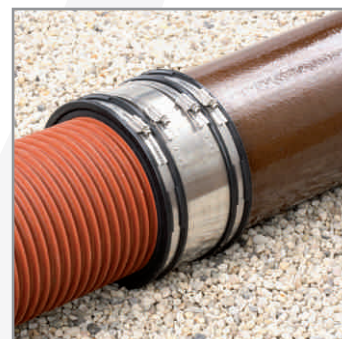
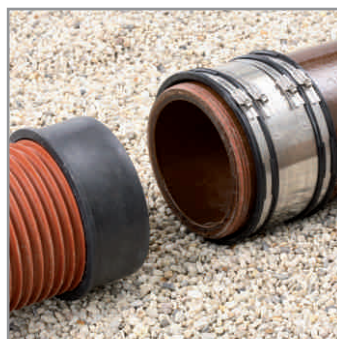
Installing Adaptor Couplings

- A. Slide coupling fully onto larger pipe.
- B. Mark smaller pipe with a pencil, half a coupling width from the joint.
- C. Insert smaller pipe up to the mark.
- D. Tighten clamps to recommended torque and tamp bedding material under pipe.



Installing Drain Couplings

- A. Slide the coupling fully onto pipe; position next pipe.
- B. Mark one pipe with a pencil, half a coupling width from the joint.
- C. Centre coupling over joint.
- D. Tighten clamps to recommended torque and tamp bedding material under pipe.



BUSHES

Installing a Canada Plus Type 2B Coupling using a Bush

- A. Slide the bush over the end of the smaller pipe. Loosen the clips on the coupling and place on the end of the larger pipe.
- B. If required, additional bushes can be placed over the first to obtain the necessary thickness.
- C. Push pipes together and slide the coupling over the bush until the ends are level. (Lubricant not required.)
- D. Tighten the central shear ring then clamps to recommended torque.
- E. Upon completion of joints, carefully tamp bedding material under the pipe.